

BUILDING CODE ANALYSIS

FACILITY DESIGNED IN ACCORDANCE WITH THE FOLLOWING:

- 2003 INTERNATIONAL BUILDING CODE
- 2003 INTERNATIONAL PLUMBING CODE
- 2003 INTERNATIONAL MECHANICAL CODE
- 2003 INTERNATIONAL ELECTRICAL CODE
- 2003 NFPA 70 LIFE SAFETY CODE

GENERAL NOTES

1. The contractor shall verify all dimensions, depths, and conditions of the job site and correct any discrepancies with the Architect before proceeding with any work.
2. The contractor shall verify all dimensions, depths, and conditions of the job site and correct any discrepancies with the Architect before proceeding with any work.
3. The Contractor shall be responsible to verify all dimensions as shown on the drawings. Any discrepancies shall be brought to the attention of the Architect prior to starting construction with applicable team, notes, and requests.
4. The Contractor shall be responsible to provide all job safety requirements in accordance with applicable laws, rules, and regulations.
5. The Architect has not been required to provide construction administration or coordination services. The Contractor shall coordinate with the Architect and Owner any construction activities that may affect the building or its systems.
6. The Contractor shall coordinate and direct the work, using the best skill and experience to ensure that the work is completed in accordance with the drawings, specifications, and program, and for coordinating all portions of the work.
7. The Contractor shall establish all line, levels, and shall coordinate the entire project with the Owner and Architect. The Contractor shall coordinate with the Owner and Architect for all construction activities that may affect the building or its systems.
8. The Contractor shall coordinate and direct the work, using the best skill and experience to ensure that the work is completed in accordance with the drawings, specifications, and program, and for coordinating all portions of the work.
9. The Contractor shall coordinate and direct the work, using the best skill and experience to ensure that the work is completed in accordance with the drawings, specifications, and program, and for coordinating all portions of the work.
10. Owner is responsible for maintaining condition of the site, such as snow and ice removal.
11. The General Contractor shall coordinate and coordinate with other Trades responsible for construction of the building, including but not limited to, Mechanical, Electrical, Plumbing, and Fire Protection.
12. The General Contractor shall coordinate and coordinate with other Trades responsible for construction of the building, including but not limited to, Mechanical, Electrical, Plumbing, and Fire Protection.
13. Removal of construction trash shall be responsible to the Contractor.
14. The Contractor shall coordinate and direct the work, using the best skill and experience to ensure that the work is completed in accordance with the drawings, specifications, and program, and for coordinating all portions of the work.
15. The Contractor shall coordinate and direct the work, using the best skill and experience to ensure that the work is completed in accordance with the drawings, specifications, and program, and for coordinating all portions of the work.
16. Construction shall not be started until all permits are obtained and all conditions of the design building are met.
17. The Contractor shall coordinate and direct the work, using the best skill and experience to ensure that the work is completed in accordance with the drawings, specifications, and program, and for coordinating all portions of the work.
18. The owner shall coordinate with his contractors for the proper installation of the building, including but not limited to, Mechanical, Electrical, Plumbing, and Fire Protection.
19. Do not work drawings. Verify locations of equipment and fixtures with other trades and at the job site.

FIRE SUPPRESSION

Automatic Fire Suppression System	YES
Exterior Walls	2 hr
Interior Walls	N.A.
Interior Ceilings (Fire Retardant)	1 hr
Columns - Per Table 602	0 hr
Fire Area Separation	1 hr
Stairs	N.A.
Floor	1 hr
Roof	0 hr

GRADE PLACES CALCULATION FOR LEASE AREA

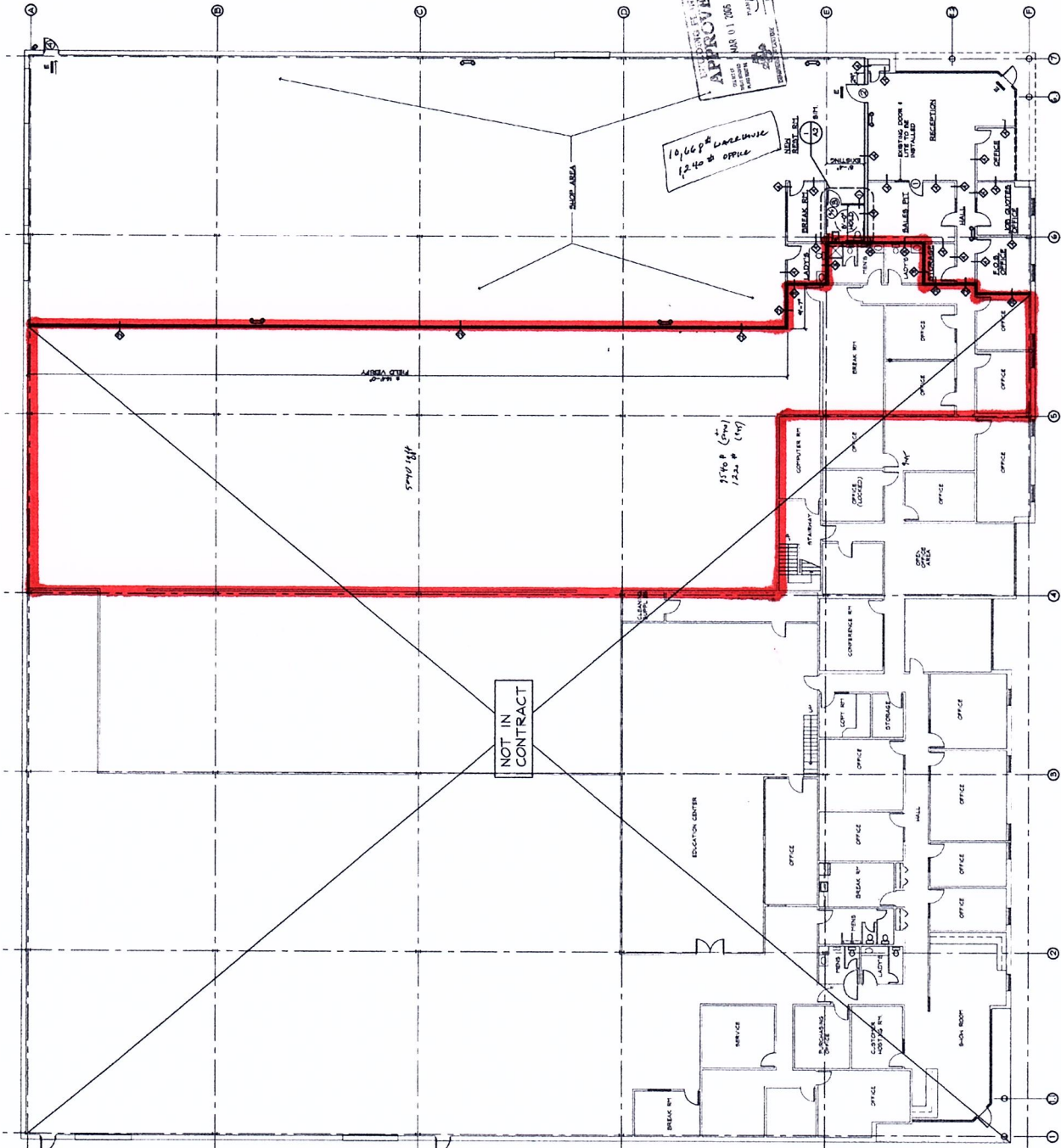
Building Area	Offices 47' x 100' GPR	Tables 47' x 10' GPR
Building Area	4700	470

EXISTING CODE COMPLIANCE

Building Information for the New Building Area is based on Information Provided by the Owner.

SYMBOLS LEGEND

- SURFACE MOUNTED LIGHT FIXTURE ABOVE LIGHT FIXTURE ABOVE
- EXTERIOR EMERGENCY LIGHT
- LIGHT SWITCH
- EXHAUST FAN TO OUTSIDE
- EXIT LIGHT
- EMERGENCY LIGHT
- LIGHT FIXTURE



FLOOR PLAN
SCALE 1/8" = 1'-0" DIMETERS EXISTING PARTITIONS
DIMETERS NEW PARTITIONS

JEFF FLOWERS ARCHITECTS + PLANNERS ASSOCIATES
ARCHITECTS + PLANNERS WASHINGTON, DC 20037-3247



APPROVED
DATE: MAR 01 2005
BY: [Signature]

PROPOSED ALTERATIONS FOR:
P.J. FITZPATRICK, INC.
NEW CASTLE, DELAWARE 19720
OWNER: PETE FITZPATRICK

REVISIONS	DATE	BY

AI
SHEET NO.